

Georgi Response P n
For
igh y P thogenic A i n, nf enz
n Po try

TABLE OF CONTENTS

EXECUTIVE SUMMARY

APPENDIX A APPENDIX B

ORDER AND GENERAL INFORMATION

Appendix A

Appendix B General Information

EXHIBIT A APPENDIX A NFL ENFORCEMENT

Appendix A Penetration for A in Georgia

Appendix B Act Enforcement for A in Georgia

EXECUTIVE SUMMARY

... .. pon y n.c.A. n.n. nz. n
... .. o de ec, con d, and e d c ze a o e z o y enc A yz 2.2

z z and d pece z ze e e o o zoono c d e ze , o an z pece z ze
n o and o zn ance o, z on o e n , z c e, e c e, o e y, an z
h and y, d e, and h an e z and ze y

Geo zDN z z o y nde e o n code ec on o pe o e nece zy d e
o ned n h p an OC A 2 . O ne p and c ody o d e d e d n
y e ze and n e c ody o e dep z en OC A 2 . 22 h z n ,
po e n , ad e e z n o d e ene y e onne o e dep z en y ze, an po ,
po e , ec, d e z c h e and y c h e an and n c e an e z ze o e e
de n z y h e OC A 2 . 2 p e o e o z d ene y Bo z d z
z o y o e ze e po z on, an po z on, ze, and po e on, o d an z /
OC A 2 . p e o e dep z en ene y d e dep z en y e z an ne o
o e ed po e o o o de e d po on o any d an z en de e ne z e d
an z z e c ed e po ed o z con z o o n e c o d e ze

III. OBJECTS AND GENERAL INFORMATION

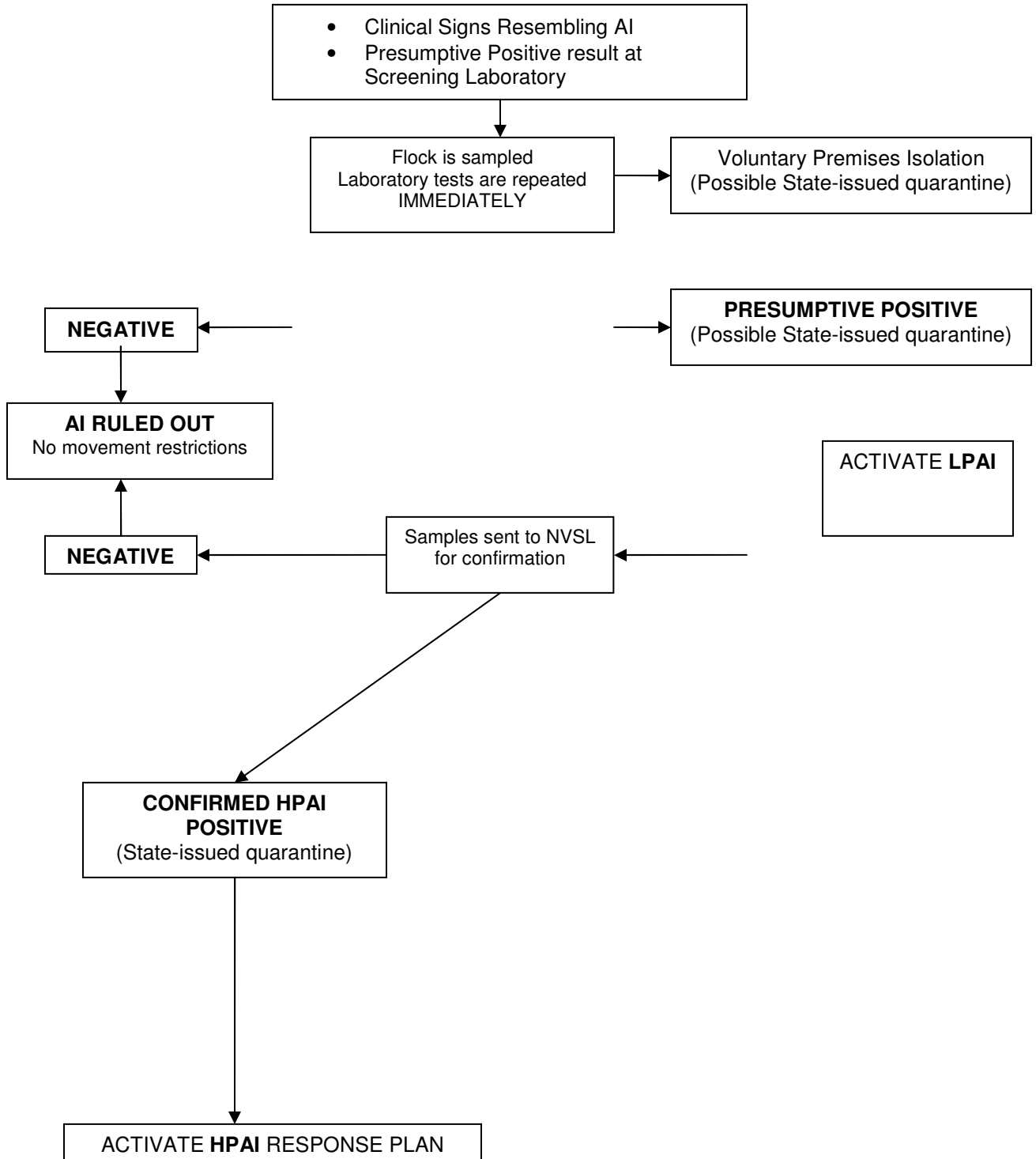
A. Object

The object of the present study is to determine the frequency of the use of the
object in the text. The study is based on the analysis of the text in the
geographical area of the study.

e eq ence of E ents nd Conseq ences d ring A, O t re

eq ence of E ents	Conseq ence
<p>p c o c n c z n and o pec e ' z e c een n ' z o z o y</p>	<p>L z o z o y e ze epe zed and add on z z p e ze co ec ed o e oc</p>
<p>Add on z z p e e and z o c een n L z o z o y m 24 h</p>	<p>L z o z o y e cond ced o n z y o z on o oc p e e z a ne o p e e</p>
<p>c een n L z o z o y e he z e o</p>	<p>oc ee o o e</p>
<p>c een n L z o z o y e po e o e p e e'</p>	<p>Ac ze L A a h h h o z y and e on o A</p>
<p>ono z p e o N L m 24 o</p>	<p>Con z o y e ze cond ced</p>
<p>N L e d o c z e ne z e o</p>	<p>oc ee o o e</p>
<p>N L e d o c z e po e o e</p>	<p>e p e e z a ne o p e e</p>
<p>z o enc y e n z N L M o ec z e e enc n 2 d y B d noc z on d y</p>	<p>L z o z o y e cond ced</p>
<p>z o enc y e ne z e o A</p>	<p>Con n e L A a</p>
<p>z o enc y e po e o A</p>	<p>Ac ze A a</p>

A i n , n f e n z F o C h r t



B Generalförderung Disziplin

Alle Teilnehmer sind herzlich eingeladen, an der Veranstaltung teilzunehmen. Die Teilnahme ist kostenlos. Die Veranstaltung wird am 14. Februar 2024 um 14:00 Uhr im Saal des Rathauses stattfinden.

A¹¹ nq̄ e o ze zence e ᄁDA, ᄁGeo zDepz en o ᄁ n e o ce, ᄁGeo zDepz en o Nz̄ z̄ e o ce, ᄁGeo zE e ency Māz̄ e en A ency, e c o o ᄁ en e z o de d d ᄁ e d ed n ᄁco d nce ᄁ ᄁ ze o ᄁGeo zDe d B d ᄁo o c d.

B Acti e r ei nce for A₂ in Georgi

ᄁGeo z ᄁy L z o z o y Ne o ᄁLN

z ᄁ ᄁ Nz̄ on z̄ C t̄ en Co nc¹ NCC ᄁ A on o n p o z̄ o co e c z̄ p o y ᄁGeo z o e co p n e p z c p z e n ᄁ NCC p o z̄, e n z̄ eede and o e ᄁoc e o e p o c e n ᄁ ᄁ Nz̄ on z̄ ᄁy p o e en ᄁ n N ᄁ, and co e pond n p o z̄ c z̄ o e n eede o e, ᄁye, p and z e d, e ᄁ on p o y, and z e o ᄁoc ᄁ o ᄁ ᄁ p o d c e e

A¹¹ p z y eede and ᄁ p e co e c z̄ p o y ᄁoc n ᄁGeo z p z c p z e n ᄁ N ᄁ, ᄁ A C e n ᄁo z̄.

- c A c on, z̄ e, and z̄
- ᄁ ᄁ ᄁ ᄁ o ᄁ ᄁ o ᄁ ᄁ p p o z e o y ᄁ z e ᄁ z e p e on ᄁ and o e z e p e en z e z p e o d o e z̄ on n en z̄ p n cond ced y ᄁLN and ᄁGeo z Depz en o A c¹ e e p e en z̄ e
- A¹¹ d z̄ p ed z̄ z c on, z̄ e and z̄ ᄁ z e e ed z̄ ᄁ ᄁLN o A n ᄁ A ᄁ D e

- d ᄁ e n o n e z e o n e n z̄ on z̄ o e en o p o y
- Co e c z̄ p o y e n o n e z e o n e n z̄ on z̄ z̄ e o e ᄁ ᄁ ᄁ ᄁ NCC and N ᄁ, e ᄁ n a c e p o z̄
- O ᄁ z̄ n p e c e z e e ed o A y n ᄁ L, A, A ᄁ D, ᄁ ᄁ C o o ᄁ n en de e c on e, z̄ de e ned y ᄁ d e n z̄ on' Nz̄ on o z̄ e en a c e e e en

2 ᄁ ᄁ z̄ en Coop e z e ᄁ d e D e z e dy C D C D and o y z̄ p e e e n z o y p e c e o n' en z̄ z̄ e ᄁGeo z ᄁ n o z̄ z o z o y z e o n e n z e z

DA ᄁ d e e ce, n p z̄ ne ᄁ ᄁ ᄁ ᄁ Geo z Depz en o Nz̄ z̄ e o ce, ᄁ d e e o ce D on ᄁ e c o e c n z̄ p e o e e c ed p e c e o z e o and ᄁ e d d n ᄁ ᄁ and n e o 2 ᄁ z̄ p e e e ed o ᄁ p e n c e o A n n' en z̄ z̄ o ned n ᄁ doc en en ed An ᄁ y De e c on y e o A n N ᄁ y ᄁ z̄ ᄁ

DEFINITION OF PEC FLOC AND CONFIRMED POSITIVE DIAGNOSIS OF PA

A Definition of suspect Floc

Lzozoy De ec on o A n ody and o

2 Any *...* doe no ee *...* an z no *...*
ence z *...* n n *...* co p z *...* y p z *...*
n *...* e o *...* enc n z e *...* 2 d *...*

Any n *...* en z z *...* no an *...* o *...* ype and *...* one o e c *...* en ,
and o n c *...* e n *...* z ence o yp n

AL PEC FLOC

A pec *...* oc *...* e *...* z on o *...* o *...* nd Lo t o n c A n

1. No zoe nAn D ezeD zno c n ADD y ed p zc ed y
ze ee n z no DA A C

2. Ad zno c n y e xco p n ed y DA o DA p p o ed pe omne

Bo ec y p oced e d e d o ed on e p e e e p zned o
co p n y o ne n d o e n z e d n

4. Ad d zno c n y e e pec c e z e n d no z on
co p n y o ne n d o e n z e

D Epidē io ogy

pec oc e n e zed n xco d nce Me o n d z 4, p oced e
o n e z n pec ed o e n An D e z

- Copy on the and the one d
- Geo zA c e Co one
- DC y con e ence c
- O e p p op ze e pon e z enc e e O MA, GAD on o c e e , A en and on D z no c L z o z o e , e e , z nece zy

A e Geo z p y ede z on n o e p e en z e o e co e c z po y nd y

PRE MP E PO E OF PA

Many add on z on e z en pon e ce p o z p e p e po e z o z o y e o N L

A niti Response first fe ho rs

Notific tion y N tion eterin ry er ices L or tory

N L ed z e y epo p e p e po e e e e e A
 C o A Ad n zo, Dep y Ad n zo, A oc ze Dep y
 Ad n zo e e ency M a z e en D z no c, A oc ze Dep y
 Ad n zo o e on z and e d Ope z on, A oc ze Dep y Ad n zo o
 N z on z An z e z cy and z , A C e o z, and pec z
 A n o e Dep y Ad n zo, A oc ze Dep y Ad n zo o
 e on z and e d Ope z on con z e e on z D e co, z no y e
 p p op ze A C A C no y z e e e n z n and z e
 z o z o y

GPLN

pon no c z on o z p e p e po e e , e GPLN pd ze
 e z z on o e z e z zone z on z n and p e p z e z epo o e DC

t te eterin ri n_Georgi Dep rt ent of Agric t re

e z z n e Geo z Lo z e n c A n n' enz z L A n e y
 e e en n z ed e nd n o z pec oc, e o n z on z
 z e p e, no z e dy co p e ed

z Dep oy z MO ADD o e p e e o e z z n ne no z e dy nde
 o c z z n ne and o con n e e p de o o c z

e Con de x z n , and e z h de ee o con dence
y e p e en

Con de x z n e n ed A e z Co and AC and e M A ency

e ppo oc e ency M an ze en A enc e n e o z e o e o e en

o de n o z on o ce o e no , z nece zy

6 Georgi Forestry Co ission

z Mo ze nc den M an ze en e z o z A and AC, pon e e

Co erci Po try, nd stry

z Ac ze nd d co pay e pon e p an

z ne C, zed, and co nc ze con ence A e o z y ede z on e e z epon o con o co ec z po y nd y

c ppo e pon e e o , nd n p z cp z on n A , AC and MAC z pp op ze

d Coo dn ze nd ye o ze, n z on z and n e n z on z nd y o p

e Co z o ze e o zD on o c e z z pp op ze

Other A i n Re ted Entities

z z bon z AC and A L z on O ce

D e n ze n o z on and p o o d e o end z on z on e nd y o p

c Co z o ze A , AC, and MAC z pp op ze

d Co z o ze e o zD on o c e z z pp op ze

X CONFIRMED POSITION OF PA

Anniti Response first fe ho rs

Notific tion yN tion eterin ry er ices L or tory

A N L con ed po e e e e d z on e epo ed o A Ad n zo, Dep y Ad n zo, and o e ed Ad n zo A oc ze Dep y Ad n zo o e on z and ed Ope z on con e e on z D eco ey, n n con e e pp op ze A C, e n con e e e n z an Con e ence c y e o an zed y A o nc de A C, ze e e n z an, and add on z c o nc de nd y z e d de C z yn z c ze z z pe p e po e c z e o con ed po e c z e e pon y o e Dep y Ad n zo

2. GPLN

pon no c z on o z con ed po e e , GP LN pd ze e z z on
o z e z zone z on z n and p ep ze z epo o DC

t te eterin ri n Georgi Dep it ent of Agric t re
o n on z ep ze, no z e dy co p e ed

z A e ed ze no c z on o o ne z e o e p e e

ed z e y no y Co one o A c e

c n o DC y con e ence c z

d Con de e e n Co one o A c e e e e ency e
o d e z e con z n en and z oc z ed o e en

↓, ↓ c and n on en z e z

4 ↓, ↓ c z e y

↓, ↓ c o

↓, ↓ de n o z on o e o e no , z nece z y

A h en e en o e no ' Dec z z on o z e o e e ency

6 Georgi Forestry Commission

Mo z e nc den M a z e en e z o z A and AC, no z e dy e e ed and o z ed

7 Poetry and Strategy

z Ac z e nd d z co p ay e pon e p a , no z e dy e z ed

↓, ↓ z ne h e C and co n c z e h e con enc e

c ppo e e pon e e o , n d n p z c p z on n e A , AC and MAC z p p o p z e

d Coo d n z e nd y e o h z e, n z on z and n e n z on z nd y o p

e Co z o z e h e e o z D on o ↓, ↓ c e z h z p p o p z e

8 Other Related Entities

z z z h on e h AC and A L z on O ce

D e n z e n o z on and p o o c o e o end z on z on e nd y o p

c Co z o z e h e A , AC, and MAC z p p o p z e

d Co z o z e h e e o z D on o ↓, ↓ c e z h z p p o p z e

Central Response throughout the index of the

the Georgian Ministry of Agriculture

z Con z O MA e z d n po e e z on o z e Ope z on Cen e OC

Con h e Co one o A c e e z d n z po e e e , z and, o e no o dep oy d d on z z e z e and o dec z e z z e o e e ency and o e e e den o a e e ency dec z z on o dec z z on o a n c den o n z on z n c nce

c e e z on Co nde o n ed A e z Co and AC DA
A C, p z c p z e n MAC o p, and ppo A A

d Mo ze add on A A z nece zy

ncident Co nd AR

z M z n z n A A e pon e

Con n e d e z e e d c z o n e o , n d n p o c e d e o n d e n y

DA A C

z e e z on Co nde o n ed A e z Co and, p z c p z e n MAC
o p and o e pon e o p, and ppo A A

A e co n c z o n z o n A Co one o A c e, A A
ze e e n z n, A A Co e no and A DA e c e z y e z d n z e e
o z DA z o d n z y e e n c y Dec z z on Co n c z e DA
n e e n A Co e no e e z e den z Dec z z on z n n c d e n o
N z on z n c a n c e e e add on z ppo o DA and o e d e z
z e n c e z c o d n o e c z e o y o d e c z z o n

c e e p DA z e n e on p p e d o c e n z

Georgi Di ision of P ic e th

z o de ppo o A AC and MAC

z ne A C and p o de co n c z o n e z d n n A z A

c Con n e OC z e

Coo d n z e d e y o e o c e o p o e c o e z e y

Con d c d e z e e n c e z o n e p o e d p e o n

den y add on z z n n p o p z o n and e p and e n c e o e e
co n e

Con n e o on o n n z c n e e c z y and n y e p o o d e e e z o n
z o n p e o n n e e c e n z c n e

ppo z e o A A A A

o de ppo o z e c e d z z u c

Coo d n z e e o c e z o n z z u c

A _____ en _____ en o _____ e no' Dec _____ on o _____ e e e ency,
no _____ dy dec _____ ed

_____ e _____ need o _____ e no o _____ e _____ e _____ den dec _____ e en
_____ an den o _____ on _____ n _____ ce ad _____ e _____ den _____ Dec _____ on o
_____ e ency

6 Co _____ erci Po _____ try _____ nd stry

_____ Con _____ ne _____ e _____ on o _____ nd _____ d _____ co _____ pay _____ e _____ pon _____ e _____ p _____ an

_____ _____ ne _____ e _____ C _____ and _____ co _____ n _____ c _____ ze _____ e _____ con _____ enc _____ e

c _____ p _____ po _____ e _____ pon _____ e _____ e _____ o _____ , _____ nd _____ d _____ n _____ p _____ z _____ c _____ p _____ z _____ on _____ n _____ e _____ A _____ , _____ AC _____ and _____ MAC
_____ e _____ app _____ op _____ ze

d _____ Co _____ od _____ n _____ ze _____ nd _____ y _____ e _____ o _____ e _____ ze _____ , _____ n _____ z _____ on _____ e _____ and _____ n _____ e _____ n _____ z _____ on _____ e _____ nd _____ y _____ o _____ p

e _____ Co _____ o _____ ze _____ e _____ e _____ o _____ e _____ D _____ on _____ o _____ c _____ e _____ e _____ e _____ app _____ op _____ ze

DA AP _____ e _____ dq _____ rters

_____ e _____ ep _____ DA _____ A _____ C _____ app _____ ed _____ o _____ c _____ en _____ n _____ z _____ on _____ e _____ z

_____ e _____ e _____ e _____ e _____ e _____ y _____ o _____ A _____ c _____ e _____ e _____ e _____ Dec _____ z _____ z _____ on _____ o _____ e _____ ency _____ and _____ o
_____ an _____ z _____ o _____ d _____ n _____ y _____ e _____ ency, _____ app _____ op _____ ze, _____ and _____ no _____ y _____ app _____ op _____ ze _____ ede _____ e
_____ z _____ enc _____ e _____ o _____ e _____ e _____ ency _____ dec _____ z _____ z _____ on

c _____ Co _____ od _____ n _____ ze _____ e _____ pon _____ e _____ e _____ o _____ DA _____ and _____ o _____ e _____ ede _____ e _____ z _____ enc _____ e _____ o
_____ p _____ po _____ DA _____ A _____ e

d _____ De _____ e _____ ne _____ ne _____ ce _____ z _____ y _____ e _____ z _____ e _____ o _____ n _____ ze _____ e _____ con _____ e _____ e _____ enc _____ e _____ o _____ e _____ o _____ e _____ z _____ o
_____ e _____ n _____ z _____ on _____ and _____ co _____ n _____ c _____ ze _____ e _____ dec _____ on _____ n _____ z _____ on _____ y _____ and _____ n _____ e _____ n _____ z _____ on _____ y _____

e _____ Co _____ od _____ n _____ ze _____ n _____ z _____ on _____ e _____ e _____ an _____ ce _____ e _____ e

De _____ e _____ ne _____ ede _____ e _____ z _____ an _____ ne _____ o _____ n _____ e _____ ze _____ and _____ n _____ z _____ ze _____ co _____ e _____ ce _____ d _____ e
_____ ed

n _____ con _____ z _____ on _____ e _____ e _____ GA _____ e _____ no _____ and _____ GA _____ Co _____ one _____ , _____ z _____ n
de _____ e _____ n _____ n _____ ne _____ ce _____ z _____ y _____ o _____ e _____ e _____ p _____ po _____ ey _____ ond _____ e _____ z _____ z _____ e _____ e _____ e _____ e _____
_____ DA

_____ e _____ e _____ e _____ e _____ ad _____ ede _____ e _____ z _____ ency _____ o _____ and _____ o _____ MA _____ o _____ co _____ od _____ n _____ ze
_____ e _____ p _____ po _____ o _____ ede _____ e _____ z _____ enc _____ e _____ o _____ p _____ z _____ e _____ z _____ on _____ o _____ e _____ N _____ z _____ on _____ e
_____ e _____ pon _____ e _____ an

Con _____ d _____ d _____ ze _____ and _____ p _____ e _____ en _____ e _____ o _____ c _____ z _____ z _____ on _____ epo _____ o _____ e _____ ce _____ z _____ y

e e o 2 nde n e pzd o a 2 ad

ze z " e ec o n e n e A e " a n c e x e o n z p e e " h
po y

- acc n z on Zone e d ze ze z " n e B e e " a n c e Zone
o n d n e n e c e d Zone e e acc n z on y e e d d e e n e d
n e c e z y
- Con d A e z ze z con n o e c o n e d n e c e d a n d B e e " a n c e
Zone " h ze z " e e c o o c z e z a n n e a n d o e e n e c o n
- e " a n c e Zone z z o n e " n e e A e z " o n d e Con d A e z " h
Zone e d e z n o 2 e n d " e z o n e " e e c o
A e " a n c e o n p e e d e e n e d o e z " h o n e c o n
- ee A e z z ze z, n d n e e " a n c e Zone, o d e o e Con d A e z a n d
d e e n e d o e e e o " A

Epidemiologic Investigation

do not contain... an epidemic... eco...
 needed...
 No...
 ...

Appraisal and Compensation

Appraisal

Admission... Compensation...
 ...

- dependency and efficiency of the feed

As expected, feed efficiency and feed conversion ratio (FCR) were lower in the high stocking density group compared to the low stocking density group. This was likely due to the higher density of birds, which resulted in increased competition for feed and space. The high stocking density group also had a higher mortality rate, which further reduced the overall efficiency of the system. The low stocking density group had a higher feed conversion ratio, indicating that they were able to convert feed into body weight more efficiently. This was likely due to the lower density of birds, which resulted in less competition for feed and space. The high stocking density group also had a higher mortality rate, which further reduced the overall efficiency of the system.

4. Dispos

The disposal of dead birds is an important aspect of biosecurity. In this study, all dead birds were disposed of in a secure manner. The disposal method used was incineration, which is a common and effective method for disposing of dead birds. The incineration process involves burning the dead birds at a high temperature, which destroys any pathogens that may be present. The ash from the incineration process is then disposed of in a secure manner. This method of disposal is considered to be one of the most effective ways to prevent the spread of disease.

4.4. The disposal of dead birds is an important aspect of biosecurity. In this study, all dead birds were disposed of in a secure manner. The disposal method used was incineration, which is a common and effective method for disposing of dead birds. The incineration process involves burning the dead birds at a high temperature, which destroys any pathogens that may be present. The ash from the incineration process is then disposed of in a secure manner. This method of disposal is considered to be one of the most effective ways to prevent the spread of disease.

And the people of the land and the
poor of the land and the
people of the land and the
people of the land and the

And the people of the land and the

zence, on z z on and up ze ec o no de o de e op no z on z ze z o

A. p e e

A p e e n a B e

no e ency ppo nc on o d o
ey e needed n do e c n den
pec c y ad e e p o ec on o z c e and
n z on z e o ce and coo d n zed y DA

oe nAn z D e z e
D z no c n ADD

A e e n z n o z z en o e n n z d e z e
z n n co e z and and ece e con n n
ed c z on n AD and n z z e ency
n z e en

oc

A o o po y on one z e cep z z ad ce on
o o c z ze A ency, ny o p o po y z
e e zed o no o p and z een o e e zed
o zpe od o z e z 2 d y y e con de ed z z
ep z ze oc

ee A e z

A z e z, n d n e e nce Zone, o de o o
Con o A e z and de e ned o e ee o A

ee e e

A p e e n e e A e z o o n z pec
e e

Geo z y L z o z o y
Ne o z N

Ope zed y Geo z y p o e en A oc z on
n con nc on z DA and Geo z Dep z en o
A c e nde con z z ee en o y n,
Co one o A c e Geo z y
p o e en A oc z on o c z z enc