

Bermudagrass Stem Maggot (BSM)

Bermudagrass
Stem Maggot
(BSM)

SE Hay Contest

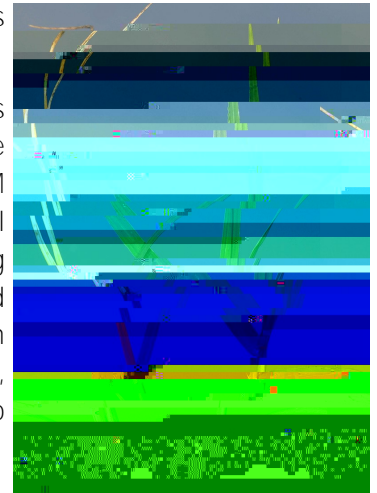
August Hay Day

Upcoming
Programs

should show evidence of insect damage or obvious decay.

There are some varieties of bermudagrass that are more susceptible to BSM damage than others but all has the possibility of being hit by the pest. A hayfield or pasture that has been damaged by BSM before, is highly susceptible to being damaged again.

This is the time of year to start noticing BSM damage in fields. On June 25, 2018 an Alicia Bermudagrass hayfield in Monroe County, on the Lamar county line, was identified with having BSM damage. Keep an eye out for damage in your bermudagrass and notify your County Extension Office if you see any.



Southeastern Hay Contest

It

set up a time to get your samples pulled by Friday, September 14, 2018.

also be found on both Upson and Lamar County's websites.

It costs \$25 to submit each sample into the contest. That covers contest registration, as well as postage.

If you

Please call the Upson County Extension office to

The description to the hay contest can be found at the link provided. The link can



Upton/Lamar Extension
University of Georgia

Upton County Extension
305 S. Hightower St.
Suite 170
Thomaston, GA 30286
(706) 647-8989

Lamar County Extension
118 Academy Drive
Suite A
Barnesville, GA 30204
(770) 358-5163

What is UGA Extension?

Through county offices throughout the state, University of Georgia Cooperative Extension offers reliable information and programs in the

